



How to install Mini-USB driver

rev. 0.2, 21/10/2016

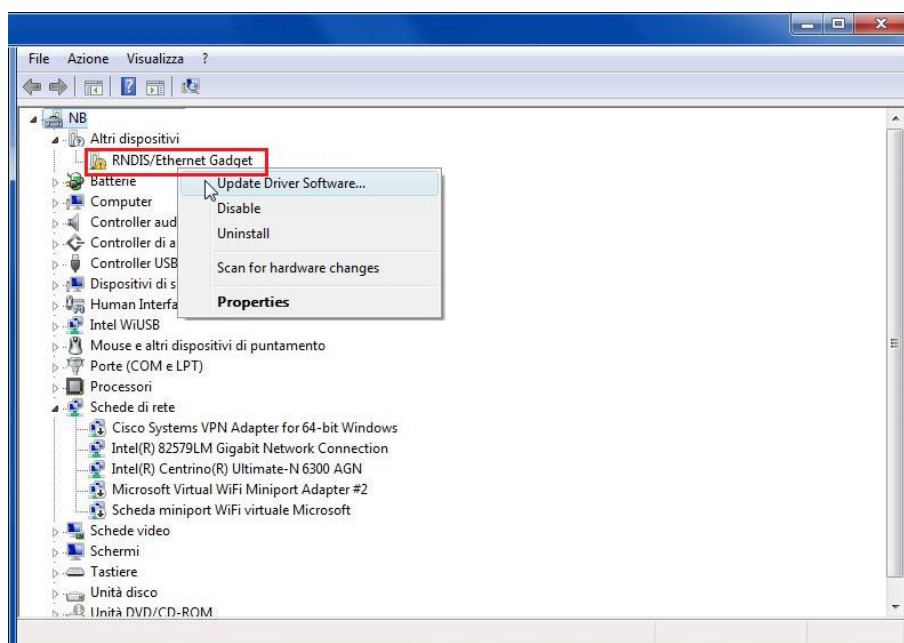
Index

<i>1.1.1 How to install the mini-USB driver for Windows 7 / Vista / XP</i>	<i>3</i>
<i>1.1.2 How to install the mini-USB driver for Windows 10 / 8.1 / 8</i>	<i>7</i>

1.1.1 How to install the mini-USB driver for Windows 7 / Vista / XP

Open the archive “*mini-USB driver.zip*” and save the file *Linux.inf* in your PC, then install the driver by following the instructions below:

1. Plug the USB connector into a free USB port of the PC and the mini-USB connector into the mini-B port of the Sx2WEB24
2. Go to *Control Panel* and open *Device Manager*.
3. Find the device *RNDIS/Ethernet Gadget*, right-click on it and select *Update Driver Software...*, as shown in the picture below.



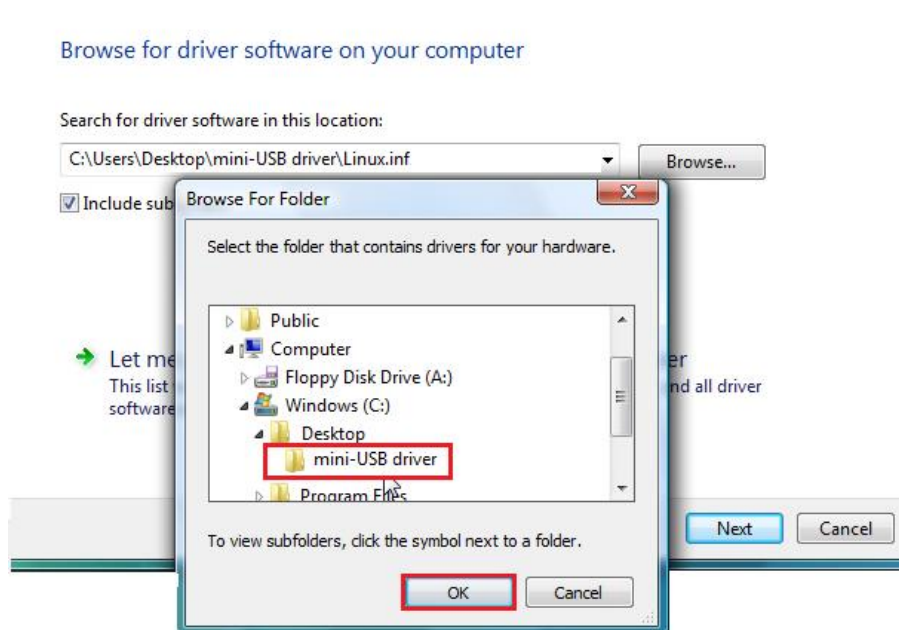
4. Select the *Browse my computer for driver software* option.

How do you want to search for driver software?

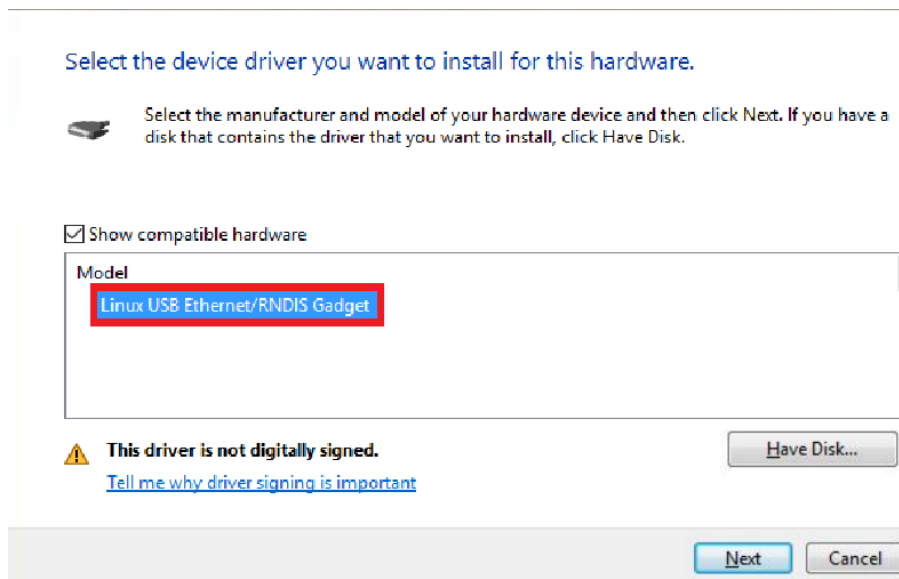
→ Search automatically for updated driver software
Windows will search your computer and the Internet for the latest driver software for your device.

→ Browse my computer for driver software
Locate and install driver software manually.

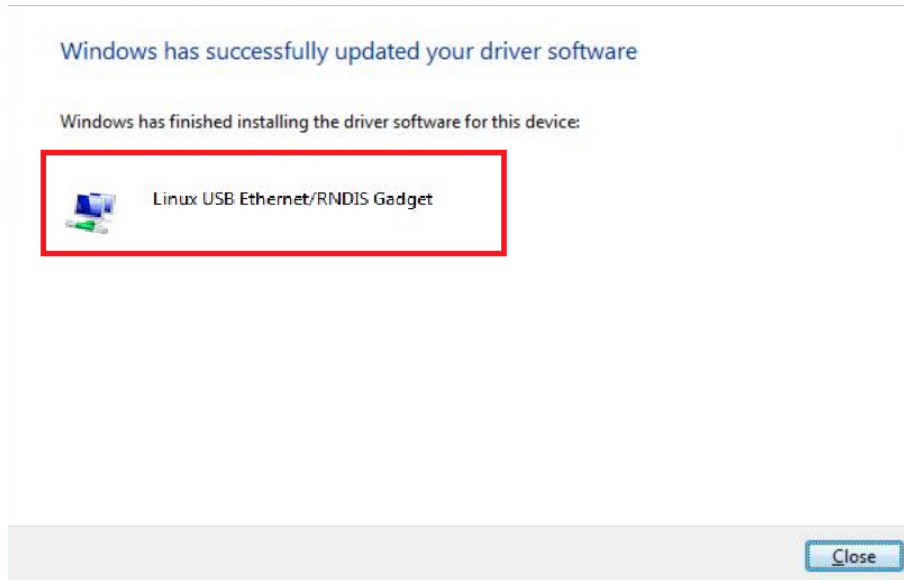
5. Browse for the *Linux.inf* driver file and press *OK*.



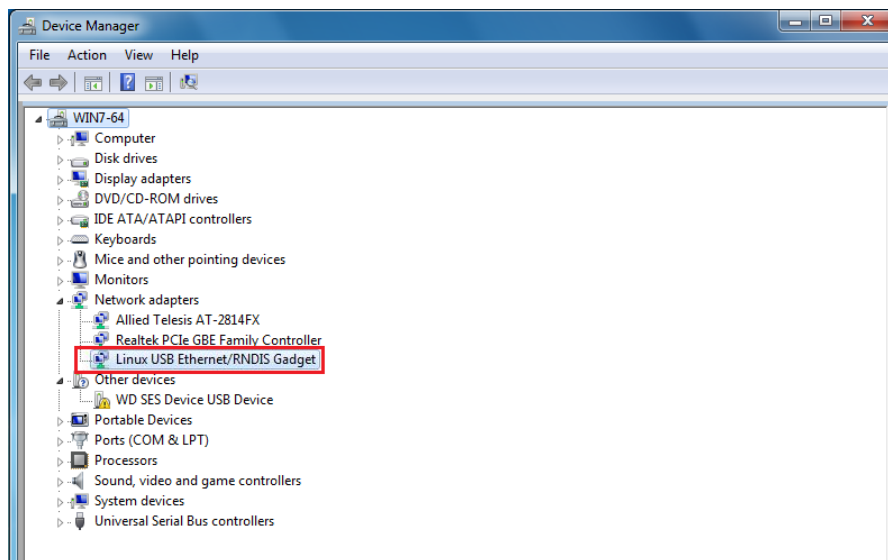
6. The driver *Linux USB Ethernet/RNDIS Gadget* will be detected: press *Next* to proceed.



7. The driver will be installed, as shown in the picture below.

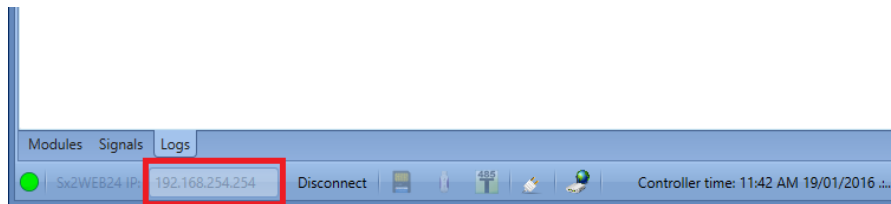


8. When the driver is installed, in the *Network adapter* category a virtual network board named *Linux USB Ethernet/RNDIS Gadget* will be added, as shown in the picture below. The driver automatically gives a dynamic IP address to the Controller/PC according to the actual IP of the PC.




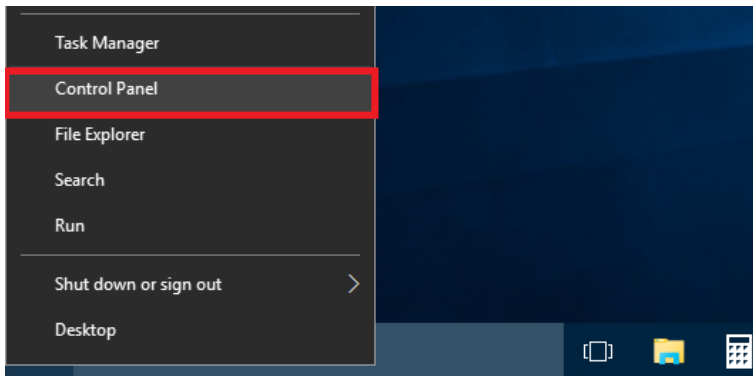
For example, if the PC has the IP address 192.168.0.10, the virtual board will be created with a new address 192.168.254.xxx and the IP address 192.168.254.254 will be assigned to the Sx2WEB24 controller.

9. Insert the IP address 192.168.254.254 in the Sx Tool and press *Connect*, as shown in the picture below:

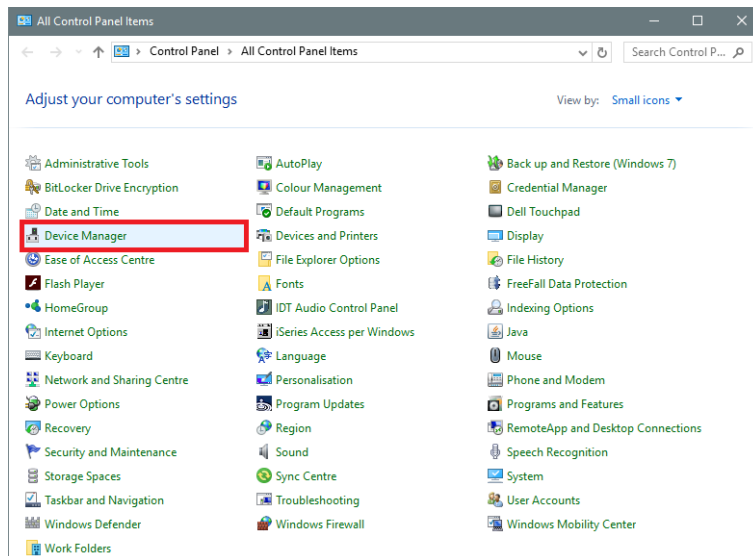


1.1.2 How to install the mini-USB driver for Windows 10 / 8.1 / 8

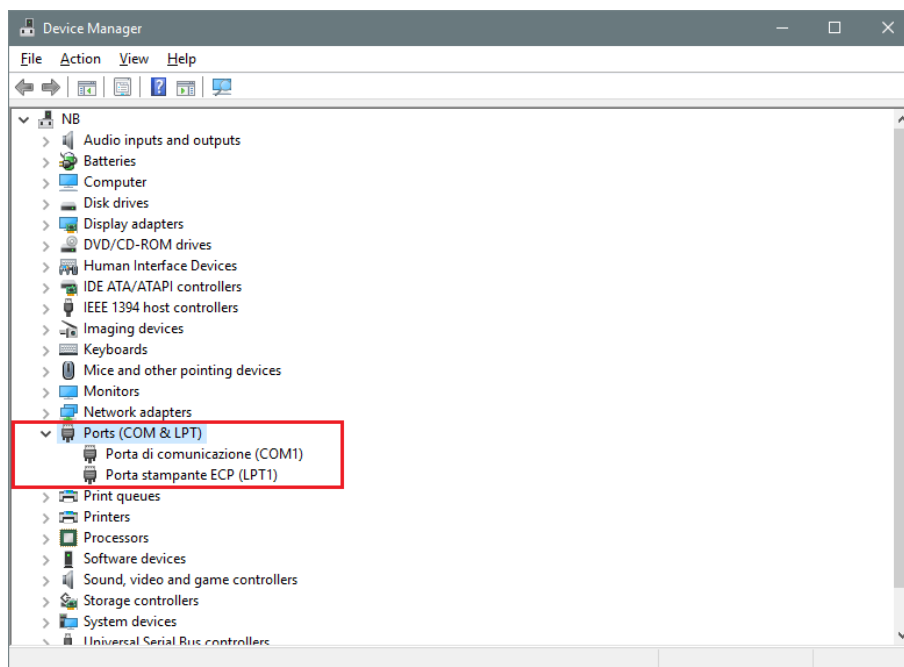
1. Open *Windows 10 Control Panel* by right-clicking on the *Start* button  and click on *Control Panel*.



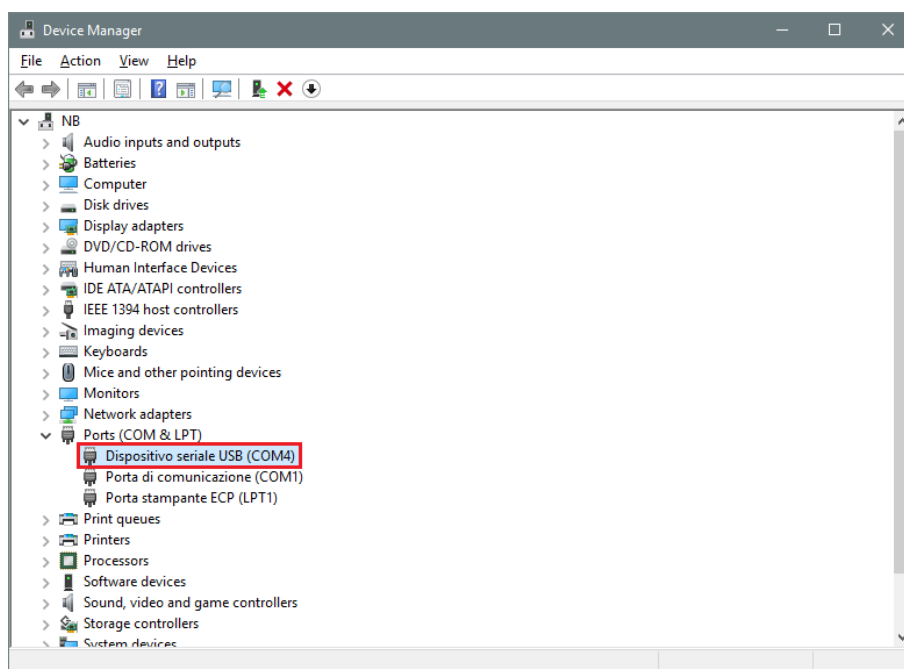
2. In *View by: Small icons*, click on *Device Manager*.



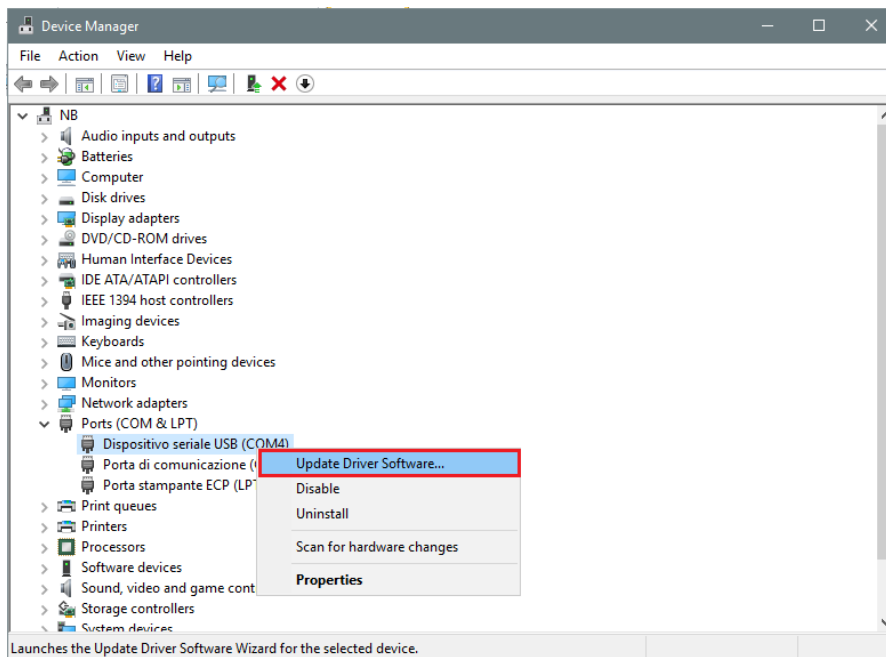
- Before connecting the mini-USB cable to the PC and to the Sx2WEB24 controller, in the list of hardware categories double-click on the category Ports (COM & LPT) and take note of the serial communication (COM) ports in use. In the example shown below, the only serial communication port is **COM1**.



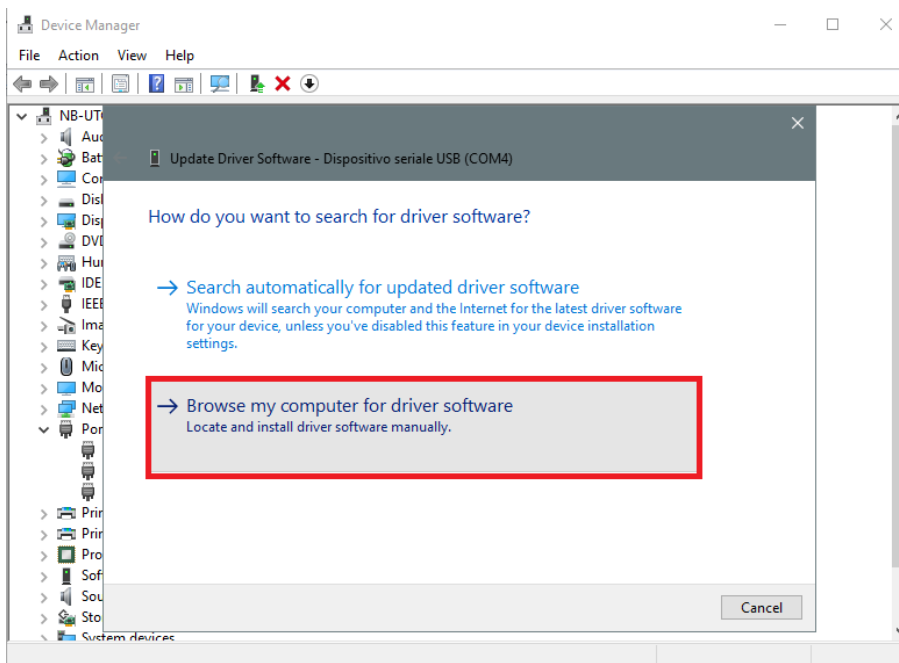
- Plug the mini-USB cable into the PC and into the Sx2WEB24 controller. A new serial communication port (COMx) will automatically be added after a few seconds. In the example shown below the new port added is **COM4**.



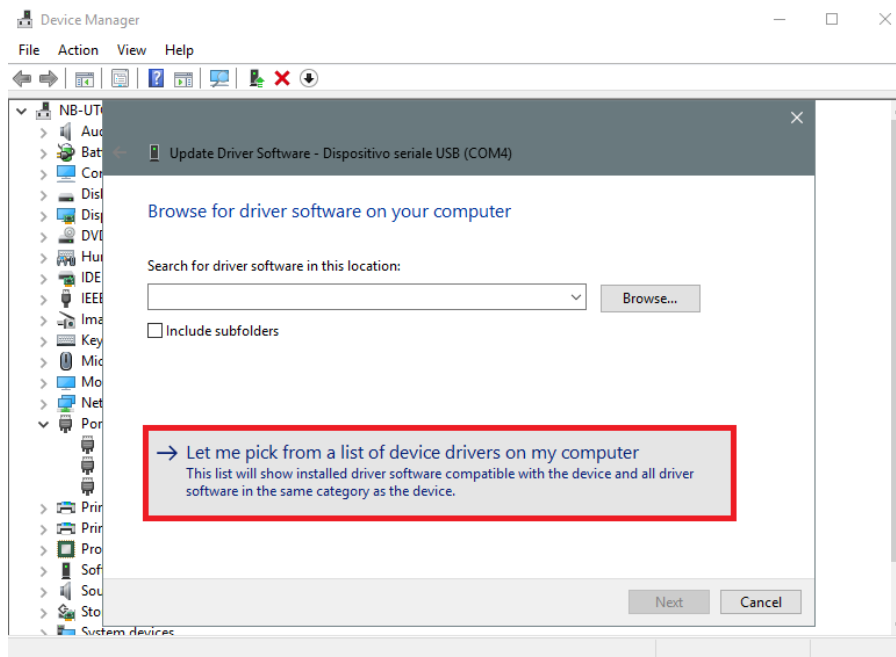
5. Right-click on the device and select *Update Driver Software...*



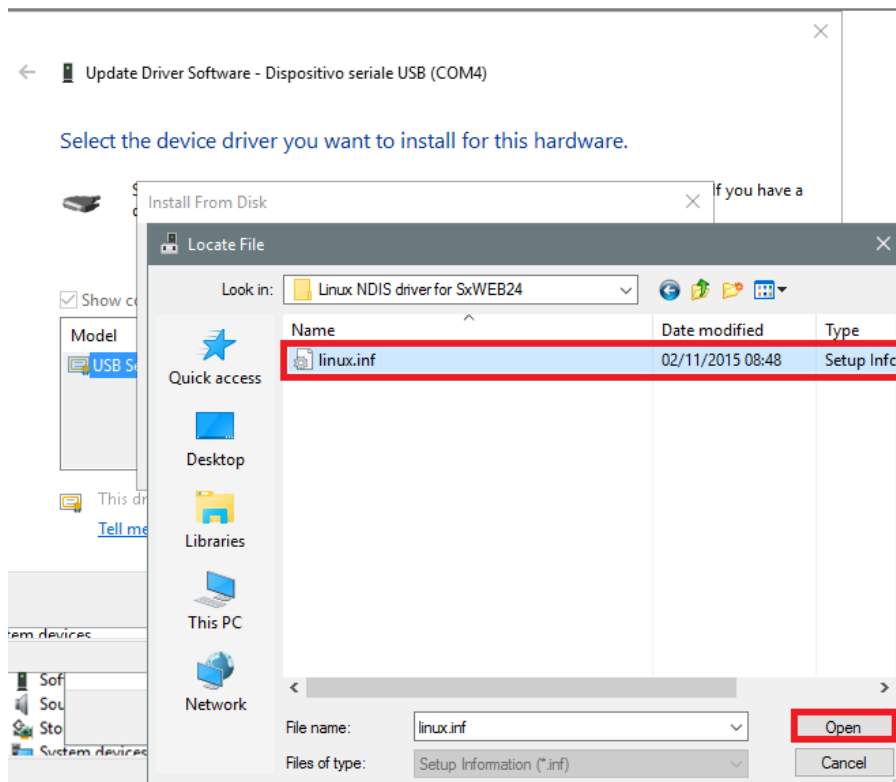
6. In the pop-up window, select the second option, *Browse my computer for driver software*



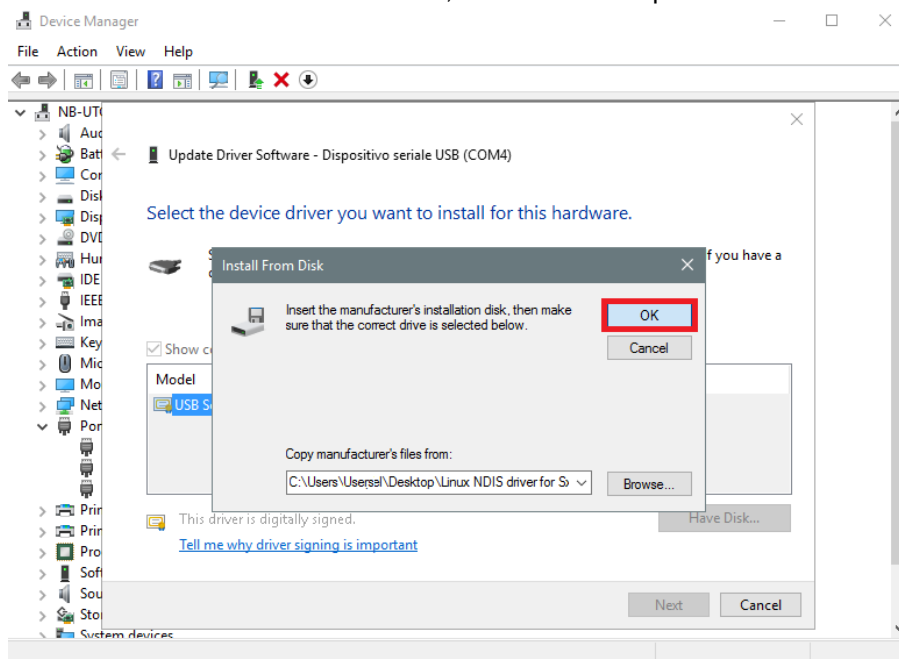
7. In the next page, select the option *Let me pick from a list of device drivers on my computer*



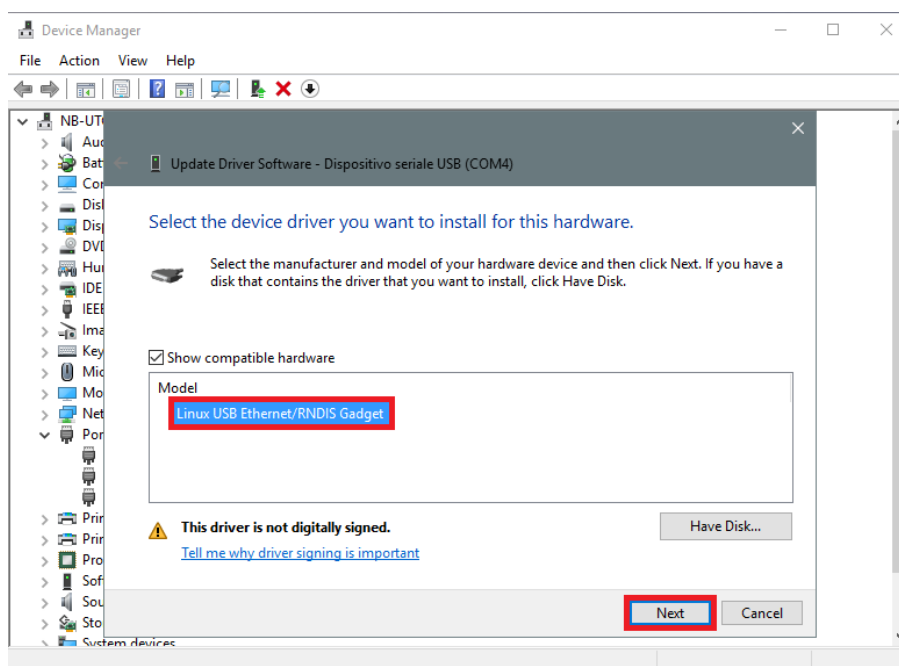
8. Browse for the *linux.inf* file, save it in the PC and press *Open*



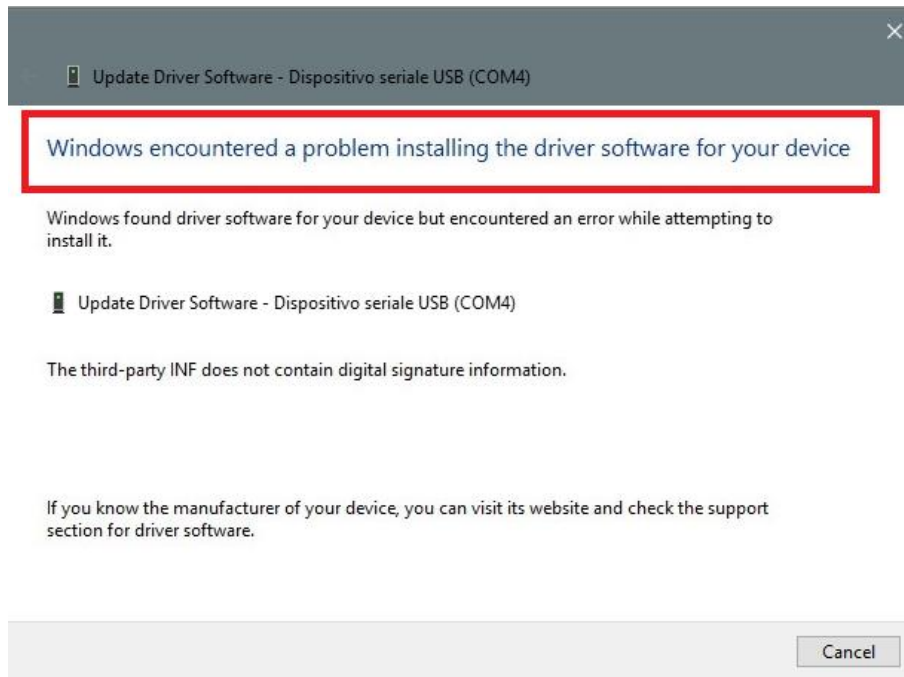
9. Press **OK** in the next window, as shown in the picture below




10. The *Linux USB Ethernet/RNDIS Gadget* is ready to be installed. Click on **Next** to continue the installation



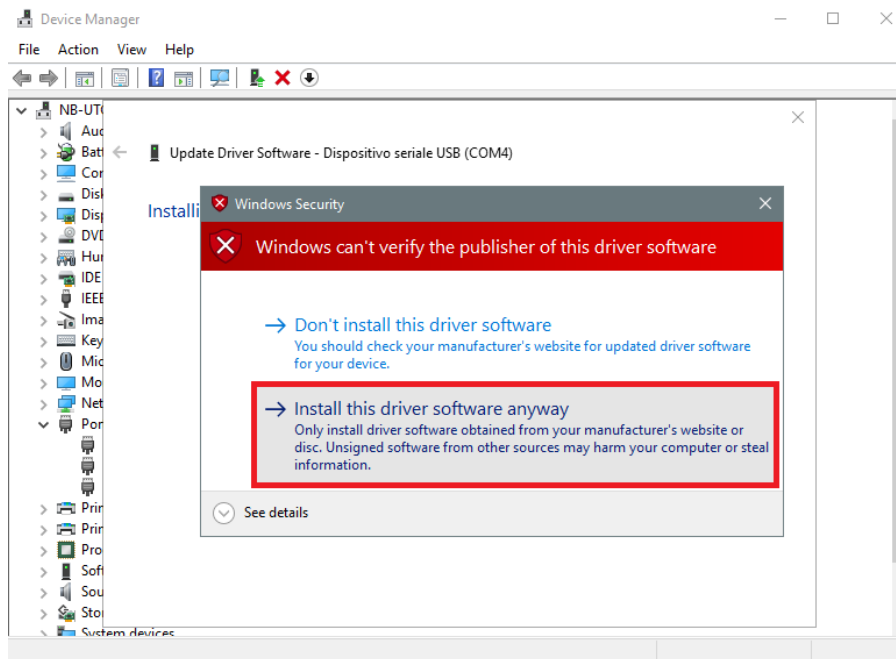
Follow the instructions below to disable driver signature enforcement **ONLY** if the user gets the error shown in the picture below, otherwise go to step 11.



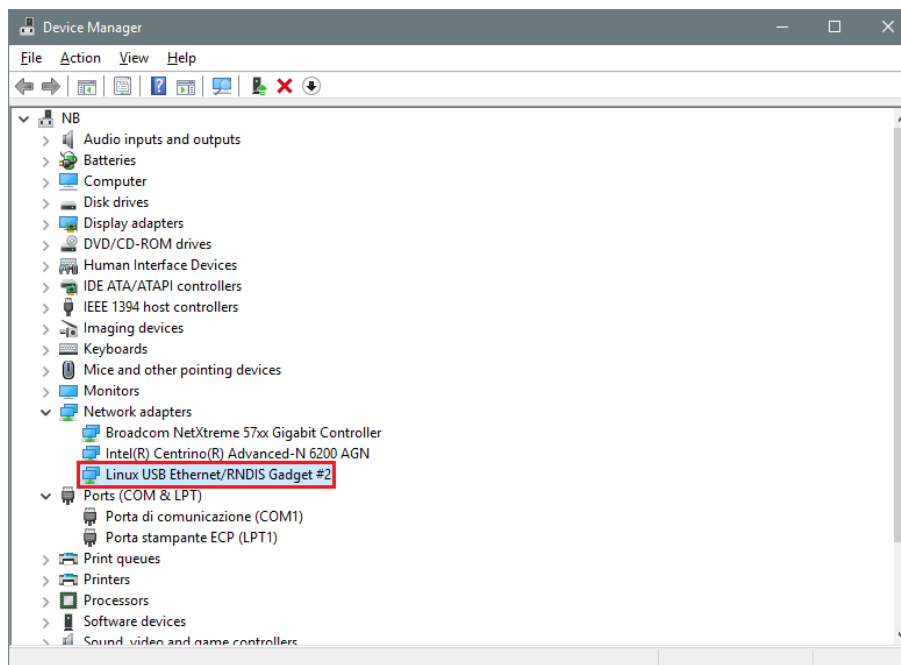
Windows 10 enforces driver signatures by default. This can be disabled to install drivers that are not digitally signed. Please refer to the following steps to disable driver signature enforcement.

1. Click the **Start**  menu and select **Settings**.
2. Click **Update and Security**.
3. Click on **Recovery**.
4. Click **Restart now** under **Advanced Startup**.
5. Click **Troubleshoot**.
6. Click **Advanced options**.
7. Click **Startup Settings**.
8. Click on **Restart**.
9. On the Startup Settings screen press 7 or F7 to disable driver signature enforcement.
10. The computer will restart and the user will be able to install non-digitally signed drivers.

11. **N.B. Windows 10 does not detect the Digital signature, so to install the driver correctly, click on Install this driver software anyway.**



12. When the driver has been installed, in the *Network adapter* category a virtual network board named *Linux USB Ethernet/RNDIS Gadget #2* will be added, as shown in the picture below.



13. The driver automatically gives a dynamic IP to the Controller/PC according to the actual IP of the PC.

For example, if the PC has the IP 192.168.0.10, the virtual board will be created with a new address 192.168.254.xxx and the address 192.168.254.254 will be assigned to the Sx2WEB24 controller.

The user can type the IP address **192.168.254.254** in the address bar and click *Connect*. The green circle icon appears in the left part of the address bar when the connection is established, as shown in the picture below.

