



UWP 3.0 Tool Download

Instructions



Download the **UWP 3.0 Tool** from this link:

We always suggest upgrading your system to the latest software release



Scarica **UWP 3.0 Tool** da questo link:

Consigliamo di effettuare sempre l'aggiornamento del sistema alla versione più recente del software



Télécharger le **UWP 3.0 Tool** de ce lien :

Nous vous suggérons de toujours mettre à jour votre système avec la plus récente version du logiciel



Descargar el **UWP 3.0 Tool** desde este enlace:

Le sugerimos que actualice siempre su sistema a la última versión del software



Laden Sie die **UWP 3.0 Tool**, von diesem Link:

Wir empfehlen Sie, Ihr System immer auf die neueste Software-Version zu aktualisieren

- **Official MILESTONE**
Official stable version to be mandatorily installed if a controller should be upgraded from an older version to a newer one ([More information](#))
- **Official**
Official stable version
- **Beta**
Beta version gives early access to new functions and upgrades of existing features. This version may be less stable than Official stable version and some features might not work properly
- **Deprecated**
The use of this version is not recommended

!! Tips & Tricks

See the pages below
Vedere le pagine seguenti
Voir les pages suivantes
Véase a continuación
Siehe unten

History

Release version:	Latest official
Release name:	8.5.30.3 24040302-R505
Download:	Download link
Release notes:	PDF Download

↑ Intermediate versions are available [here](#)

Official MILESTONE 8.5.0.3	Download link
-----------------------------------	-------------------------------

↑ Intermediate versions are available [here](#)

Official MILESTONE 8.3.3.3	Download link
-----------------------------------	-------------------------------



Older official release version

Older versions are available here: [Download link](#)

Instructions



Download the **UWP 3.0 Tool** from this link:

We always suggest upgrading your system to the latest software release



Scarica **UWP 3.0 Tool** da questo link:

Consigliamo di effettuare sempre l'aggiornamento del sistema alla versione più recente del software



Télécharger le **UWP 3.0 Tool** de ce lien :

Nous vous suggérons de toujours mettre à jour votre système avec la plus récente version du logiciel



Descargar el **UWP 3.0 Tool** desde este enlace:

Le sugerimos que actualice siempre su sistema a la última versión del software



Laden Sie die **UWP 3.0 Tool**, von diesem Link:

Wir empfehlen Sie, Ihr System immer auf die neueste Software-Version zu aktualisieren

- **Official MILESTONE**
Official stable version to be mandatorily installed if a controller should be upgraded from an older version to a newer one ([More information](#))
- **Official**
Official stable version
- **Beta**
Beta version gives early access to new functions and upgrades of existing features. This version may be less stable than Official stable version and some features might not work properly
- **Deprecated**
The use of this version is not recommended

!! Tips & Tricks

See the pages below
Vedere le pagine seguenti
Voir les pages suivantes
Véase a continuación
Siehe unten

History

Intermediate versions between latest official and milestone

Release version: **Official**
Release name: **8.5.28.3 24021601 – R501**
Download: [Download link](#)

Release version: **Official**
Release name: **8.5.26.3 23121502 – R497**
Download: [Download link](#)

Release version: **Official**
Release name: **8.5.25.3 23112701 – R494**
Download: [Download link](#)

Release version: **Official**
Release name: **8.5.22.3 23092701 – R490**
Download: [Download link](#)

Release version: **Official**
Release name: **8.5.21.3 23072501 – R487**
Download: [Download link](#)

Release version: **Official**
Release name: **8.5.20.3 23062002 – R484**
Download: [Download link](#)

Release version: **Official**
Release name: **8.5.19.3 23060102 – R479**
Download: [Download link](#)

Release version: **Official**
Release name: **8.5.18.3 23050801 – R477**
Download: [Download link](#)

Release version: **Official**
Release name: **8.5.14.3 23021001 – R465**
Download: [Download link](#)

Release version: **Official**
Release name: **8.5.11.3 22121401 – R458**
Download: [Download link](#)

Release version: **Official**
Release name: **8.5.8.3 22100401 – R449**
Download: [Download link](#)

Release version: **Official**
Release name: **8.5.6.3 22091201 – R446**
Download: [Download link](#)

Release version: **Official**
Release name: **8.5.4.3 22072701 – R435**
Download: [Download link](#)



Release version: **Official**
Release name: **8.5.2.3 22062101 – R427**
Download: [Download link](#)

Instructions



Download the **UWP 3.0 Tool** from this link:

We always suggest upgrading your system to the latest software release



Scarica **UWP 3.0 Tool** da questo link:

Consigliamo di effettuare sempre l'aggiornamento del sistema alla versione più recente del software



Télécharger le **UWP 3.0 Tool** de ce lien :

Nous vous suggérons de toujours mettre à jour votre système avec la plus récente version du logiciel



Descargar el **UWP 3.0 Tool** desde este enlace:

Le sugerimos que actualice siempre su sistema a la última versión del software



Laden Sie die **UWP 3.0 Tool**, von diesem Link:

Wir empfehlen Sie, Ihr System immer auf die neueste Software-Version zu aktualisieren

- **Official MILESTONE**
Official stable version to be mandatorily installed if a controller should be upgraded from an older version to a newer one ([More information](#))

- **Official**
Official stable version
- **Beta**
Beta version gives early access to new functions and upgrades of existing features. This version may be less stable than Official stable version and some features might not work properly
- **Deprecated**
The use of this version is not recommended

!! Tips & Tricks

See the pages below
Vedere le pagine seguenti
Voir les pages suivantes
Véase a continuación
Siehe unten

History

Intermediate versions between milestones

Release version: **Official MILESTONE**
Release name: **8.5.0.3 22042701 – R413**
Download: [Download link](#)

Release version: **Official**
Release name: **8.4.17.3 22041501 - R397**
Download: [Download link](#)

Release version: **Official**
Release name: **8.4.16.3 22032501 - R391**
Download: [Download link](#)

Release version: **Official**
Release name: **8.4.14.3 22012601 - R379**
Download: [Download link](#)

Release version: **Official**
Release name: **8.4.11.3 21111801- R373**
Download: [Download link](#)

Release version: **Official**
Release name: **8.4.10.3 21102702 - R371**
Download: [Download link](#)

Release version: **Official**
Release name: **8.4.8.3 21090302 - R363**
Download: [Download link](#)

Release version: **Official**
Release name: **8.4.5.3 21070502 - R350**
Download: [Download link](#)

Release version: **Official**
Release name: **8.4.4.3 21060902 - R346**



Download: [Download link](#)
Release version: **Official**
Release name: **8.4.2.3 21051704 - R342**
Download: [Download link](#)
Release version: **Official**
Release name: **8.4.1.3 21042201 - R339**
Download: [Download link](#)

Release version: **Official**
Release name: **8.4.0.3 21033001 - R334**
Download: [Download link](#)
Release version: **Official MILESTONE**
Release name: **8.3.3.3 20120901 - R308**
Download: [Download link](#)

Tips & Tricks

Index

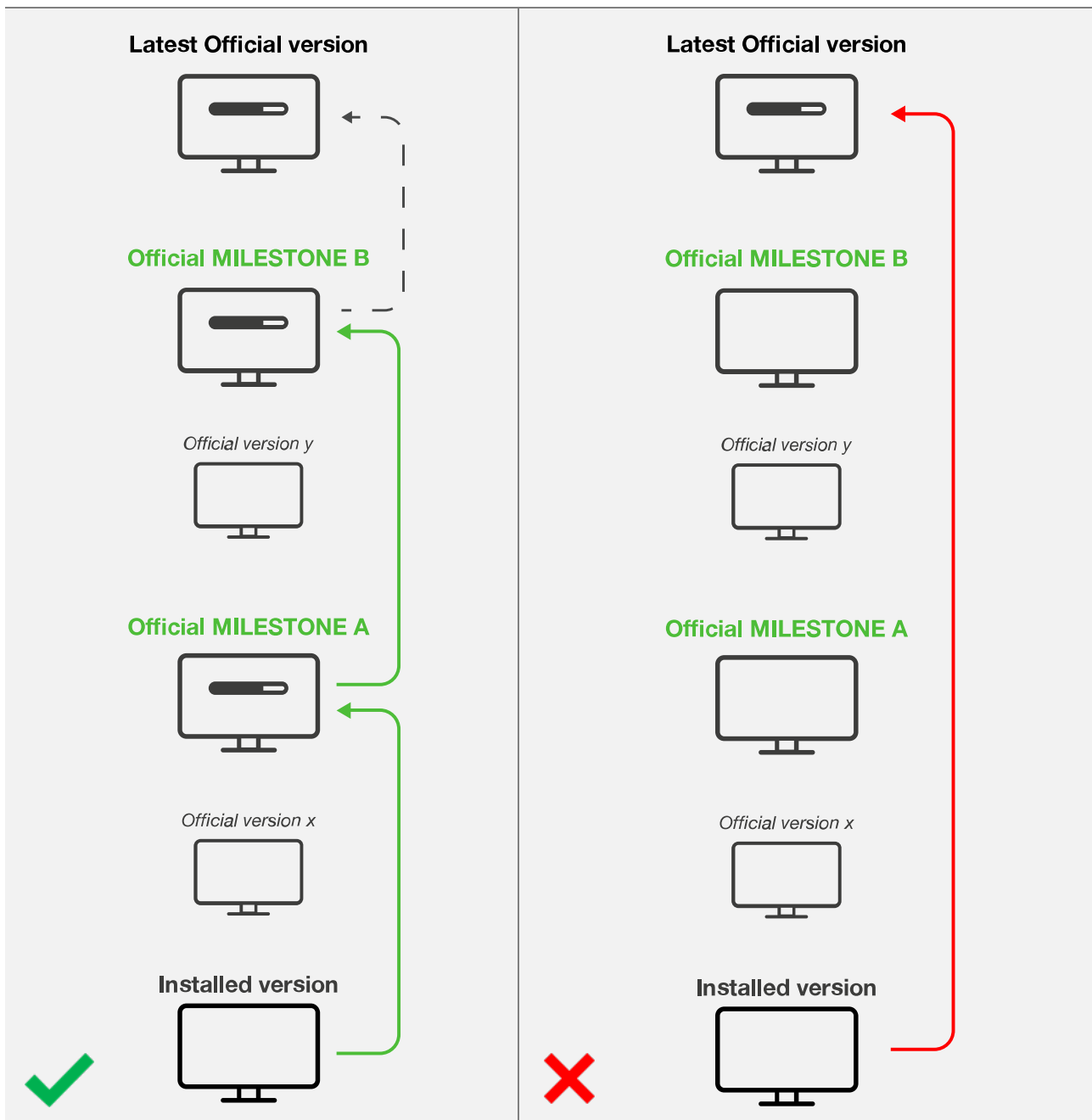
<i>Upgrading procedure for Cybersecurity updates.....</i>	<i>5</i>
<i>BACnet Objects.....</i>	<i>6</i>
<i>Energy save timer is not reloaded when the light level is above the threshold.....</i>	<i>6</i>
<i>Reports created from web App shows wrong month.....</i>	<i>7</i>
<i>Not possible to edit calendar activity from the web App.....</i>	<i>8</i>
<i>Not possible to log additional function status in the Database.....</i>	<i>8</i>
<i>Wrong icons shown in the web App.....</i>	<i>9</i>
<i>Not possible to scan the DALI network “subnet not found” error message appears.....</i>	<i>10</i>
<i>Dupline temperature regulation function deactivates the heating setpoint.....</i>	<i>11</i>
<i>Calendar activities cannot be added.....</i>	<i>12</i>
<i>Configuration upload failing – Intruder alarm function and stress lights.....</i>	<i>13</i>
<i>How to add a WEBCAM on ownControl App.....</i>	<i>14</i>
<i>Download button is not available.....</i>	<i>15</i>
<i>Download configuration shows 100% but the modules icons are not updated.....</i>	<i>16</i>
<i>How to fix a configuration with duplicated IDs.....</i>	<i>17</i>

Upgrading procedure for Cybersecurity updates

Official MILESTONE versions have to be mandatorily installed if a UWP 3.0 controller should be upgraded from an older version to a newer one. This requirement is necessary since each Official MILESTONE release includes important *Cybersecurity updates* that are required by subsequent Official versions. Specifically, all the intermediate Official MILESTONE versions between the installed version and the latest Official one must be installed sequentially.

Example

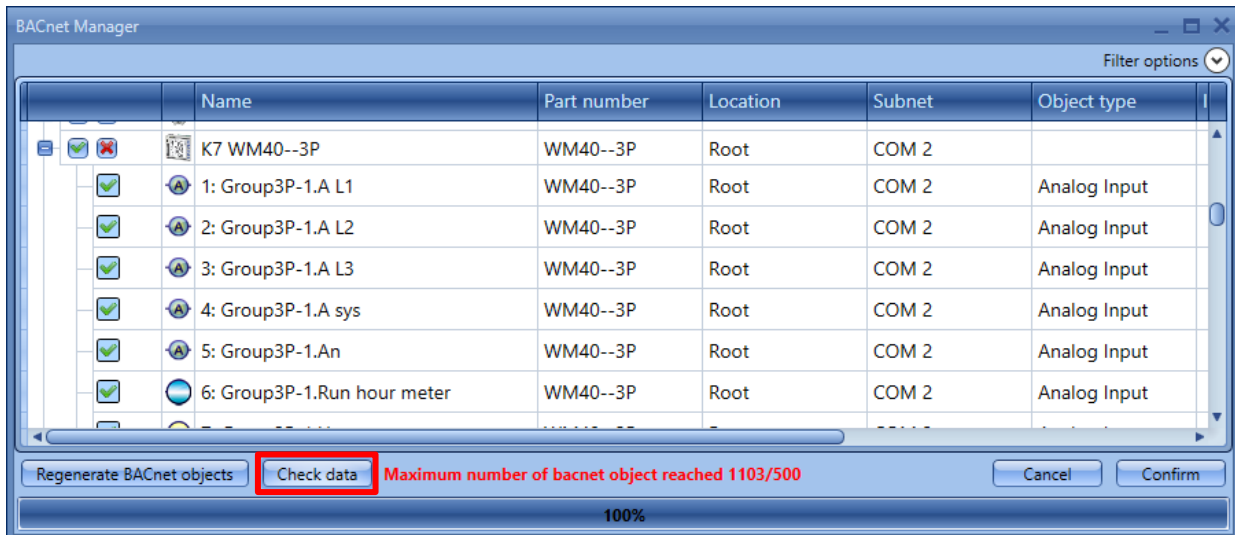
As shown in the example below, if the installed version is older than the Official MILESTONE A and the target Official version is equal or newer than the last Official MILESTONE (*i.e.* B), the intermediate Official MILESTONE A and B must be installed sequentially before upgrading to the latest Official version.



BACnet Objects

Important: Starting from the version 8.2.9.3, up to 500 BACnet Objects can be managed in a project.

To check if a project complies with this limitation, click on *BACnet management* icon in the *Program Setup* menu, then click on **Check data** button:



As shown in the example above, a warning message will be displayed if the maximum number of BACnet Objects has been exceeded and their amount; otherwise the **Ok** message will be displayed when it is compliant.

Note: It is mandatory to delete the excess BACnet Objects and compile the configuration before sending the project to the UWP 3.0 controller.

Energy save timer is not reloaded when the light level is above the threshold

Problem description

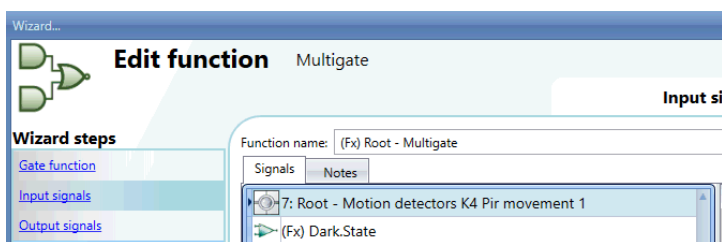
The automation of the light function puts together lux meter, PIR and energy save timer.

When the lux value is below the threshold and the PIR detects movement, the light goes on.

At this point the lux value goes above the threshold and the energy save timer is not reloaded anymore, therefore the light goes off even if there is presence in the room.

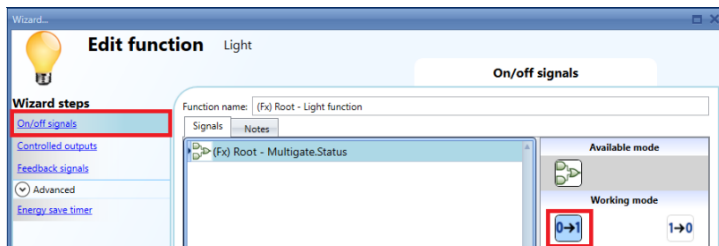
Solution

Create an external analogue comparator that is used to define the "dark" condition. Use the comparator function as input of a multigate "AND" function combined with the *movement signal* of the PIR sensor.

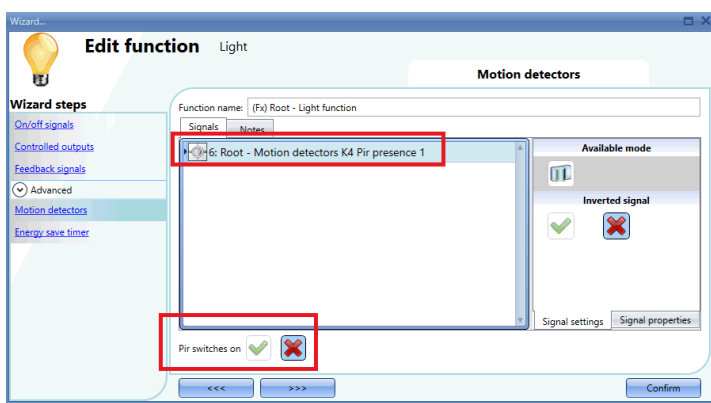




Use the multigate as input signal (*On/Off Signals* tab) of the Light function.



In the light function, add the presence signal of the PIR.



Reports created from web App shows wrong month

Problem description

In the web app *Reports* window, you have created a template for a report in October 2018 but when you save and create the report, November 2018 data logs are shown.

Solution

You may face this issue if you run a Web browser with Norwegian or Chinese language.

The problem is due to the wrong default language that is automatically set by the Web App.

To fix this issue, navigate the web App settings, select the English language, then select again the correct language and save to apply the settings.



Not possible to edit calendar activity from the web App

Problem description

When you try to edit a calendar activity from the Web App, you get an error and the login page is shown.

Solution

You may face this issue if you run a Web browser with Norwegian or Chinese language.

The problem is due to the wrong default language that is automatically set by the Web App.

To fix this issue, navigate the web App settings, select the English language, then select again the correct language and save to apply the settings.



Not possible to log additional function status in the Database

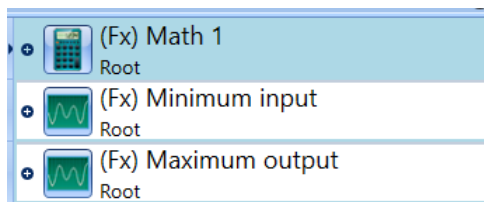
Problem description

In the Database window, the additional function status of a function is not available and it is not possible to log them into the Database of the system.

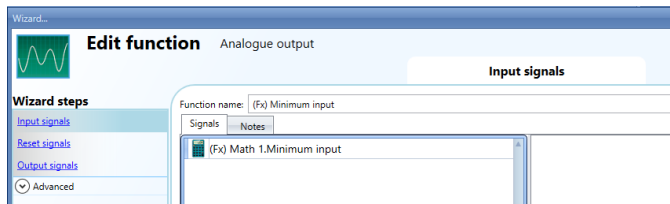
Solution

This procedure has to be followed in order to log the addition status of the functions in the Database (for example the additional status of a math function).

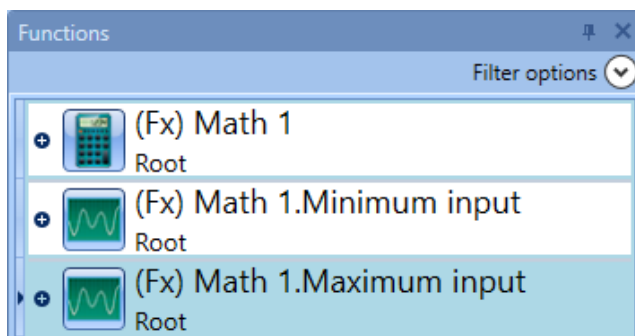
- a. Add to the project one Analog Output function for each additional status not available in the Database.



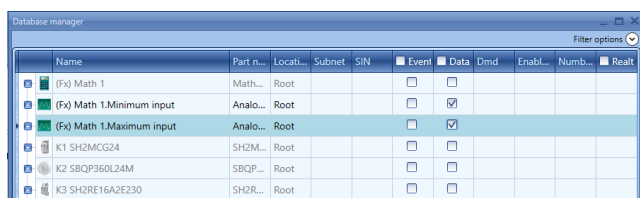
- b. Add to the analogue output function the additional status of the math function.



- c. Change the name of the Analog Output functions in order to have a clear description of the additional status (es. function_name” + “additional_status”).



- d. In the DB Manager add to the Database the Analog Output function.



Name	Part n...	Locati...	Subnet	SIN	Event	Data	Dmd	Enabl...	Num...	Realt
(Fx) Math 1	Math...	Root			<input type="checkbox"/>	<input type="checkbox"/>				
(Fx) Math 1.Minimum input	Analo...	Root			<input type="checkbox"/>	<input checked="" type="checkbox"/>				
(Fx) Math 1.Maximum input	Analo...	Root			<input type="checkbox"/>	<input checked="" type="checkbox"/>				
K1 SH2MCG24	SH2M...	Root			<input type="checkbox"/>	<input type="checkbox"/>				
K2 SBQP360L24M	SBQP...	Root			<input type="checkbox"/>	<input type="checkbox"/>				
K3 SH2RE16A2E230	SH2R...	Root			<input type="checkbox"/>	<input type="checkbox"/>				

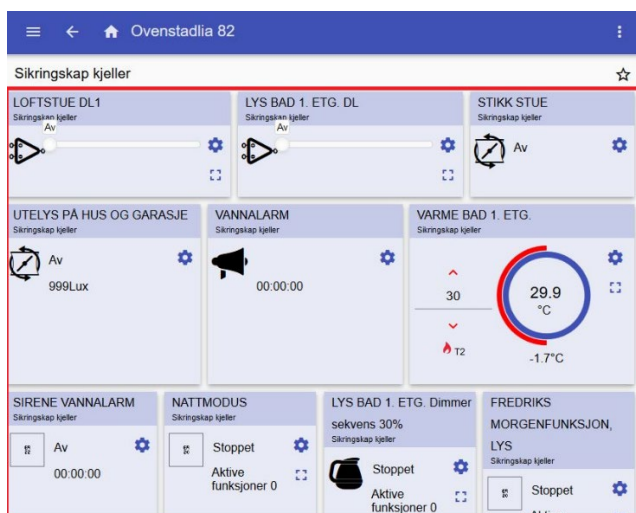
Wrong icons shown in the web App

Problem description

After a firmware upgrade of the system the icons in the web App are not correct (the icons are messed up or missing).

Solution

The error is due to the cache of the web browser, the issue will be resolved cleaning the cache and logging-in again in the web App.



Not possible to scan the DALI network “subnet not found” error message appears

Problem description

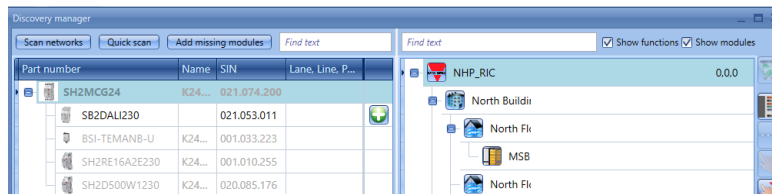
After adding the DALI module to the project, from the DALI module discovery window, the user tries to find the ballast connected, but when the search button is pressed, the discovery ends immediately with an error “Subnet not found”



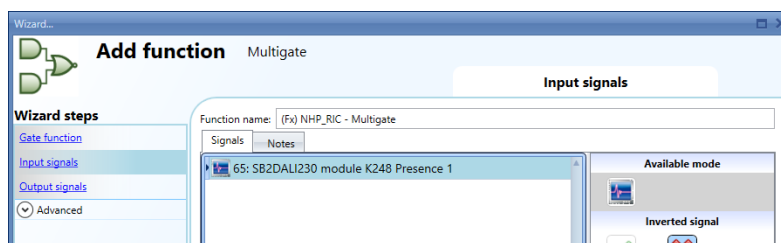
Resolution

This is the list of steps to follow to fix the issue

1. Delete the SB2DALI module from the project and add it again after a discovery.



2. Add a multigate function and use the presence diagnostic signal of the DALI module as input signal of the function.



3. Write the configuration to the Sx2Web controller.
4. When the DALI module is programmed it should be possible to scan the DALI modules from the module “search window”.

Dupline temperature regulation function deactivates the heating setpoint

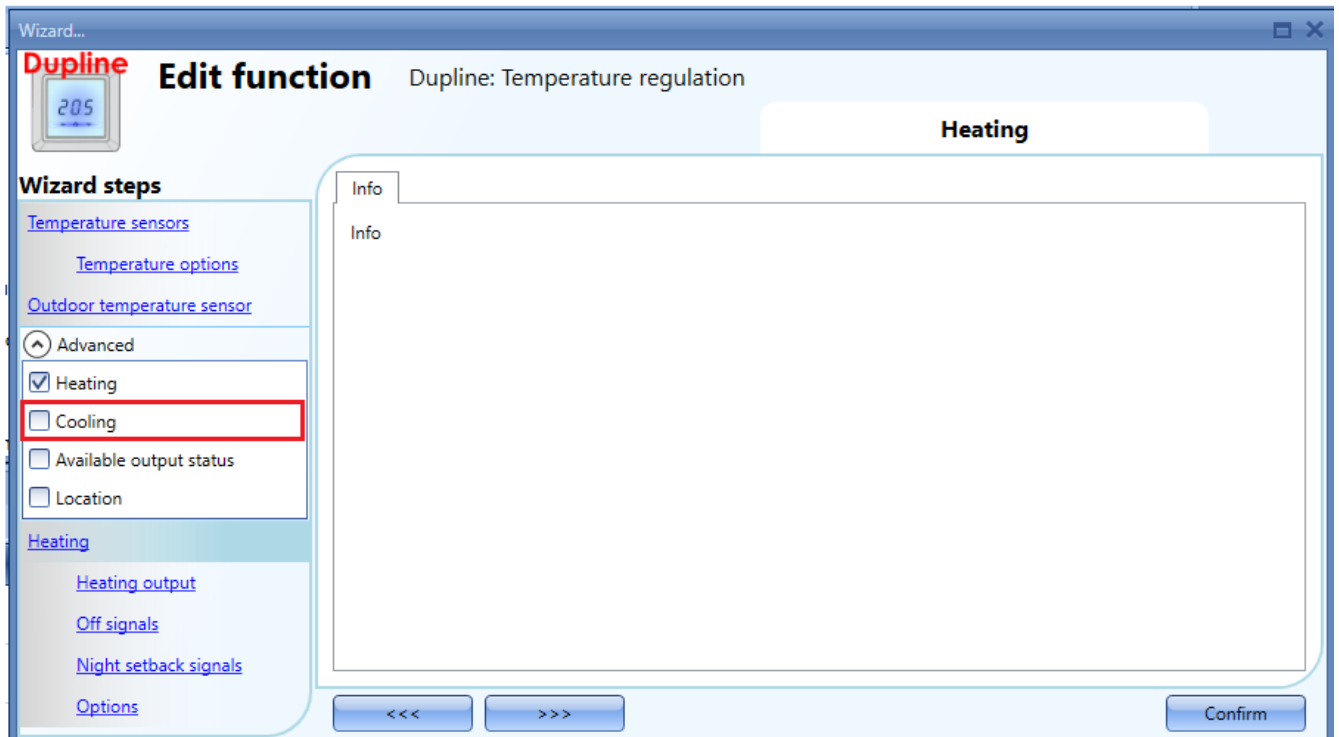
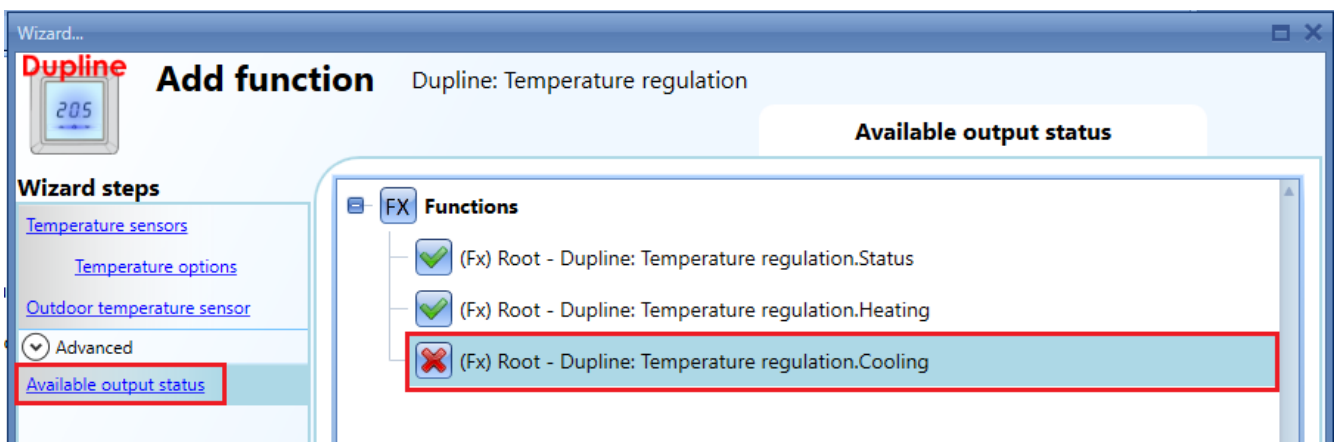
Problem description

When the advanced field Cooling is selected in the Dupline temperature regulation and there is no output signal used, the temperature function activates the cooling set point every time the configuration file is sent to the controller, consequently the heating function goes from heating T1 to TOFF and stops heating. This problem happens also when the controller restarts because the system loads the configuration at start-up and the cooling setpoint is activated.

Resolution

In the advanced menu “available output status” the signal *temperature regulation.Cooling* should be deactivated.

The advanced menu “Cooling” should be unselected.



Calendar activities cannot be added

Problem description

When a calendar activity is going to be added either in the *Local calendar* of the functions where it is available in the *Advanced* options, or in the *Global calendar* function, after filling the required fields the *Confirm* button cannot be pressed (this is shown in grey colour).

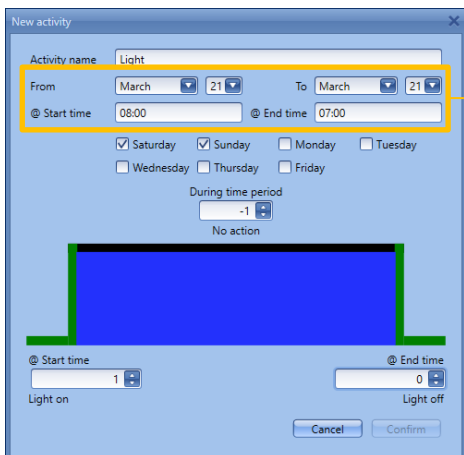
Resolution

This happens if at least one of the following conditions is verified:

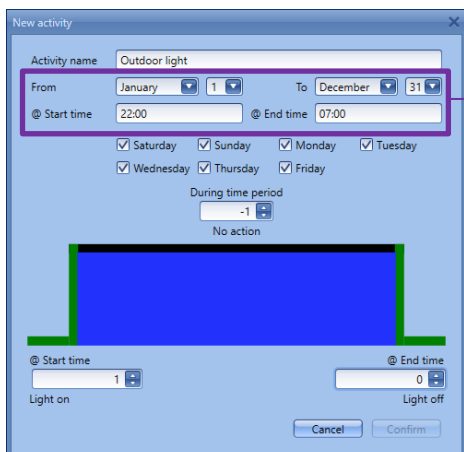


The *Activity name* field has to be entered

At least one week day has to be selected



a) With the same selected interval date (*From... To...*), it is necessary to set *@Start time* chronologically prior to *@End time*



b) Even with a different selected interval date (*From... To...*), it is still necessary to set *@Start time* chronologically prior to *@End time*

Configuration upload failing – Intruder alarm function and stress lights

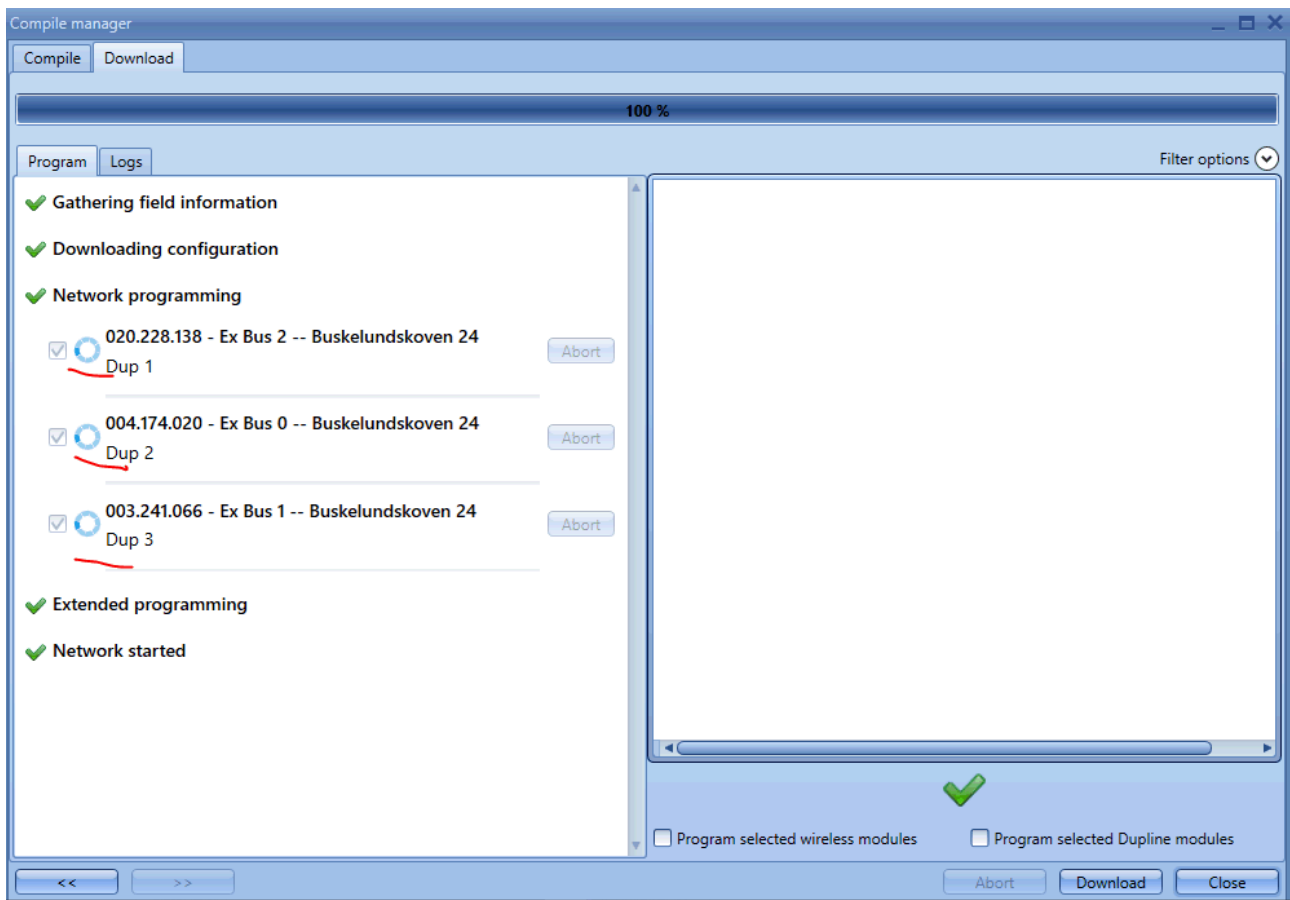
Problem description

Configuration upload failing after a modification of the stress light functionality in the intruder alarm function and the system does not work as expected (no error is shown when the software compiles the configuration). This problem occurs every time a light function is added as “stress light” signal in two or more intruder alarm functions.

Solution

It is mandatory to use each light function in one single *stress light* functionality

Note: It is not possible to add the same function in two or more different stress light fields.



How to add a WEBCAM on ownControl App

To add a WEB CAM, please make sure the device is compliant with ONVIF technology and the RTSP protocol is enabled. The procedure below only shows how to set up a network camera on ownControl App: the camera must be connected and configured on the network before being added to ownControl App.

In the App homepage, tap on  then on  to access the *NEW WEB CAM configuration* page.

<
NEW WEB CAM
Save

NAME

IP/URL

PORT

USER

PASSWORD

PATH RTSP

Fill in the following information:

NAME. Label description (location, model, etc..)

IP/URL. Camera IP address or DYNDNS hostname

PORT. RTSP port (usually 554)


USER/PASSWORD. Camera administrator username and password

PATH RTSP. The path can be found in the camera user's manual, in the manufacturer website or in an online source like **ISPYConnect**, the largest online camera database


Example 1: Configuration of Webcam HIKVISION DS-2CD2325FWD-I with **online reference**

- Find the RTSP path of the camera model on <https://www.ispyconnect.com/sources.aspx>
The RTSP path is shown on the *Path* column (red box below):

Model	Protocol	RTSP	Path
DS-2CD2325FWD-I	FFMPEG	rtsp://	/Streaming/Channels/101

- Fill in ONLY the **Streaming/Channel/101** path in the *PATH RTSP* field.
 Do not insert the first "/" since it is automatically provided by ownControl App.
- Tap on *Save* to store the changes.

Example 2: Configuration of Webcam HIKVISION DS-2CD2325FWD-I with **Manufacturer reference**

- Find the RTSP parameter from the camera [User's manual](#)
Usually, the manufacturers report the complete path that includes username, password, IP address and port.
Example: `rtsp://admin:admin@192.168.0.1:554/ch1/main/av_stream`
- Fill in ONLY the **ch1/main/av_stream** path in the *PATH RTSP* field.
 Do not insert the information before "ch1/..." since the configuration parameters have to be entered separately in the above-mentioned fields.
- Tap on *Save* to store the changes.

Download button is not available

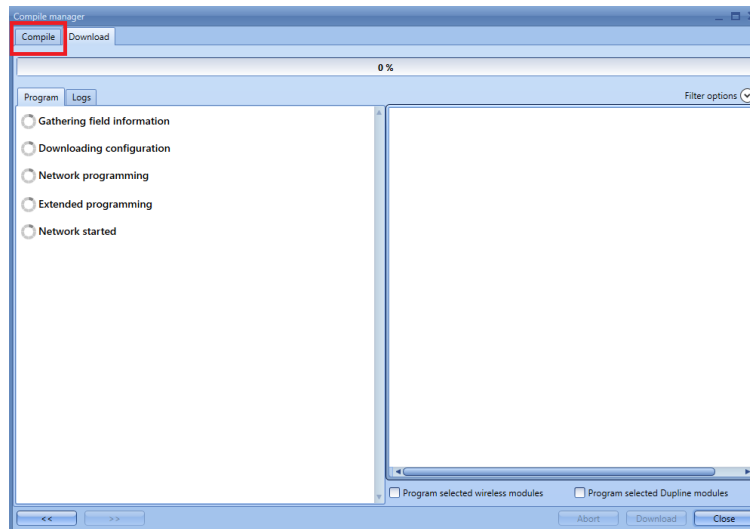
Problem description

The *Download* button is not selectable after clicking on the *Send to controller* button from the *Configuration* menu.

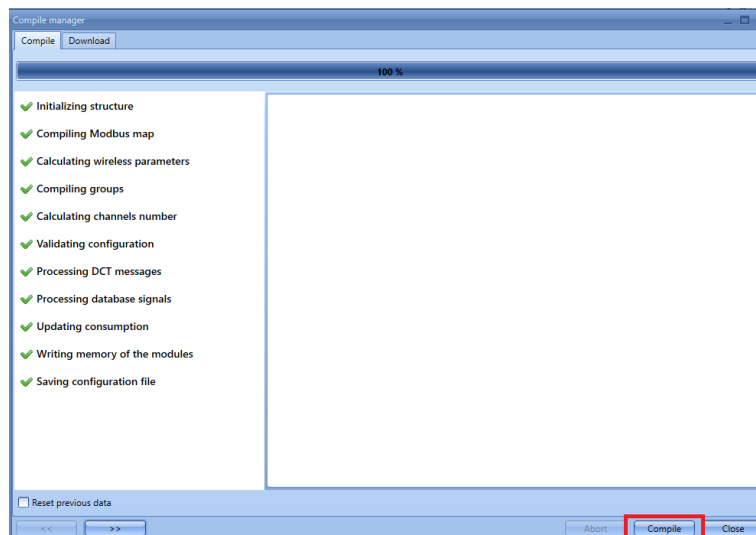
This problem occurs every time a pre-compiled configuration is loaded in the UWP 3.0 Tool and the user clicks on the *Send to controller* button without compiling the configuration file.

Solution

1. Do not close the *Compile manager* window and go back to the previous *Compile* window



2. Click on the *Compile* button at the bottom

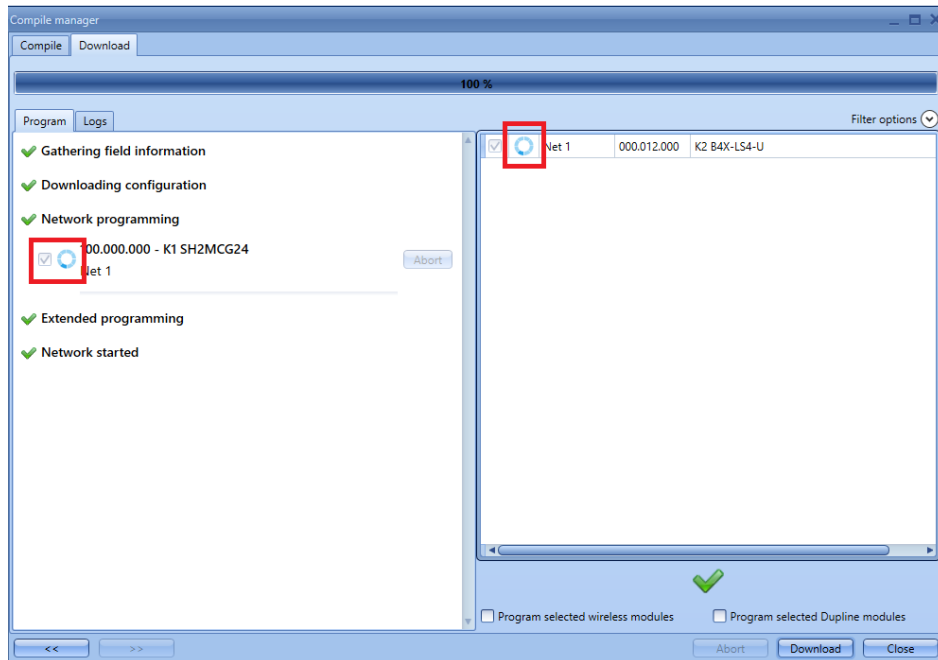


3. The configuration upload will start automatically

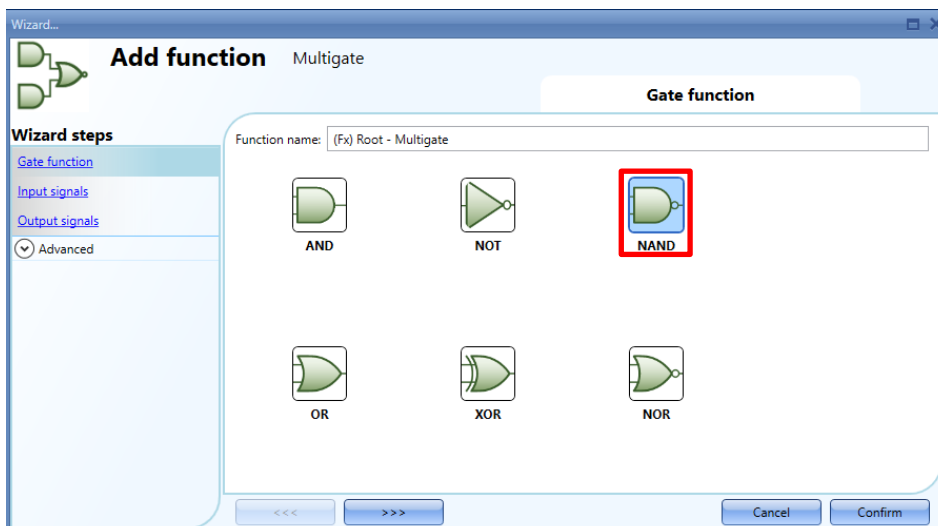
Download configuration shows 100% but the modules icons are not updated

Problem description

The *Download* of the configuration leads to an issue in the *Download manager* window: the icons next to the modules keep spinning even if the progress bar shows 100%.



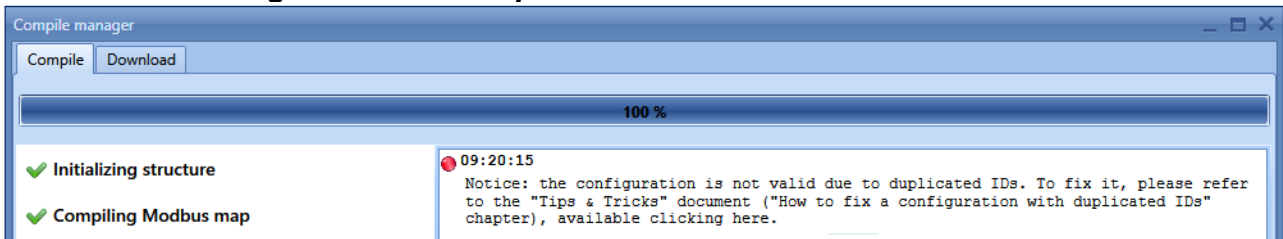
This problem occurs every time a project contains a *Multigate* function that is configured as NAND operator without input signals (the *Input signals* window is empty).



Solution

Delete all the *Multigate* functions without input signals from the project.

How to fix a configuration with duplicated IDs



If while compiling a configuration you get warned about duplicated IDs (see picture above), you can fix the configuration as follows:

1. Unselect all the signals enabled in the database.
2. Compile the configuration and save it on your PC.
3. Close and reopen the UWP 3.0 Tool.
4. Open the configuration previously saved.
5. Add again the signals to the database.
6. Compile so to be sure that the problem has been solved.

Note: the signals could lose some historical data. If necessary, export the data before starting the above-described procedure.