



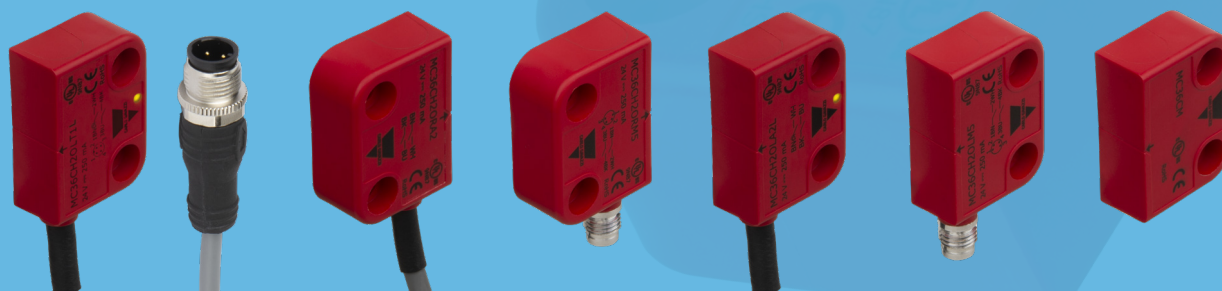
Safety magnetic sensors

Sensors

MC36C series

Compact safety magnetic sensors

The MC36C are encoded safety magnetic sensors with compact housing used to monitor the position of hinged, sliding or removable guards of industrial applications. Carlo Gavazzi safety sensors stop or disconnect the dangerous motions, if the mobile protections are opened or displaced. They are suitable for safety gates applications up to safety category 4, PL e according to EN ISO 13849-1 with suitable logic safety module. The MC36C sensors are the ideal solution in applications where the installation space is limited.



Highest performance in a small size

The safety magnetic sensors together with the magnetic actuator are particularly suitable to monitor protections of the safety gates that allow the entry to machines with dangerous movements, mainly in environment with strong presence of dust and dirtiness.

Customizable

- The sensors are available with left or right exit, integrated cable, M8 or pig-tail with M12 connector and optionally LED indicator
- 2 normally open, 1 normally open + 1 normally closed or 2 normally open and 1 normally closed contacts (with open guard)

Standards compliance

- Up to Cat. 4 PL e in accordance with EN ISO 13849-1

High performance

- Assured switching distance (Sao) of 5 mm, assured switch-off distance (Sar) of 15 mm (with actuator MC36CM)
- Reinforced polymeric casing (PBT) with a protection degree IP67, operating temperature range from -25°C to +80°C
- IP69K protection degree for M8-plug versions without LED
- Compact dimensions: only 36 x 26 x 13 mm



MC88C series

Safety magnetic sensors



The MC88C are encoded safety magnetic sensors with rectangular housing, used to monitor the position of hinged, sliding or removable guards of industrial applications.

Carlo Gavazzi safety sensors stop or disconnect the dangerous motions, if the mobile protections are opened or displaced. They are suitable for safety gates applications up to safety category 4, PL e according to EN ISO 13849-1 with suitable logic safety module.

Up to 3 outputs available, with switching distance depending on the actuator chosen.

Thanks to their wide actuation range MC88C sensors are the right solution in applications where a precise approach is not possible and greater tolerances are required.



Extra-long switching distance

The safety magnetic sensors together with the magnetic actuator are particularly suitable to monitor protections of the safety gates that allow the entry to machines with dangerous movements, mainly in environment with strong presence of dust and dirtiness.

Customizable

- The sensors are available with left or right exit, integrated cable, M8 or pig-tail with M12 connector and optionally LED indicator
- 2 normally open, 1 normally open + 1 normally closed or 2 normally open and 1 normally closed contacts (with open guard)

Standards compliance

- Up to Cat. 4 PL e in accordance with EN ISO 13849-1

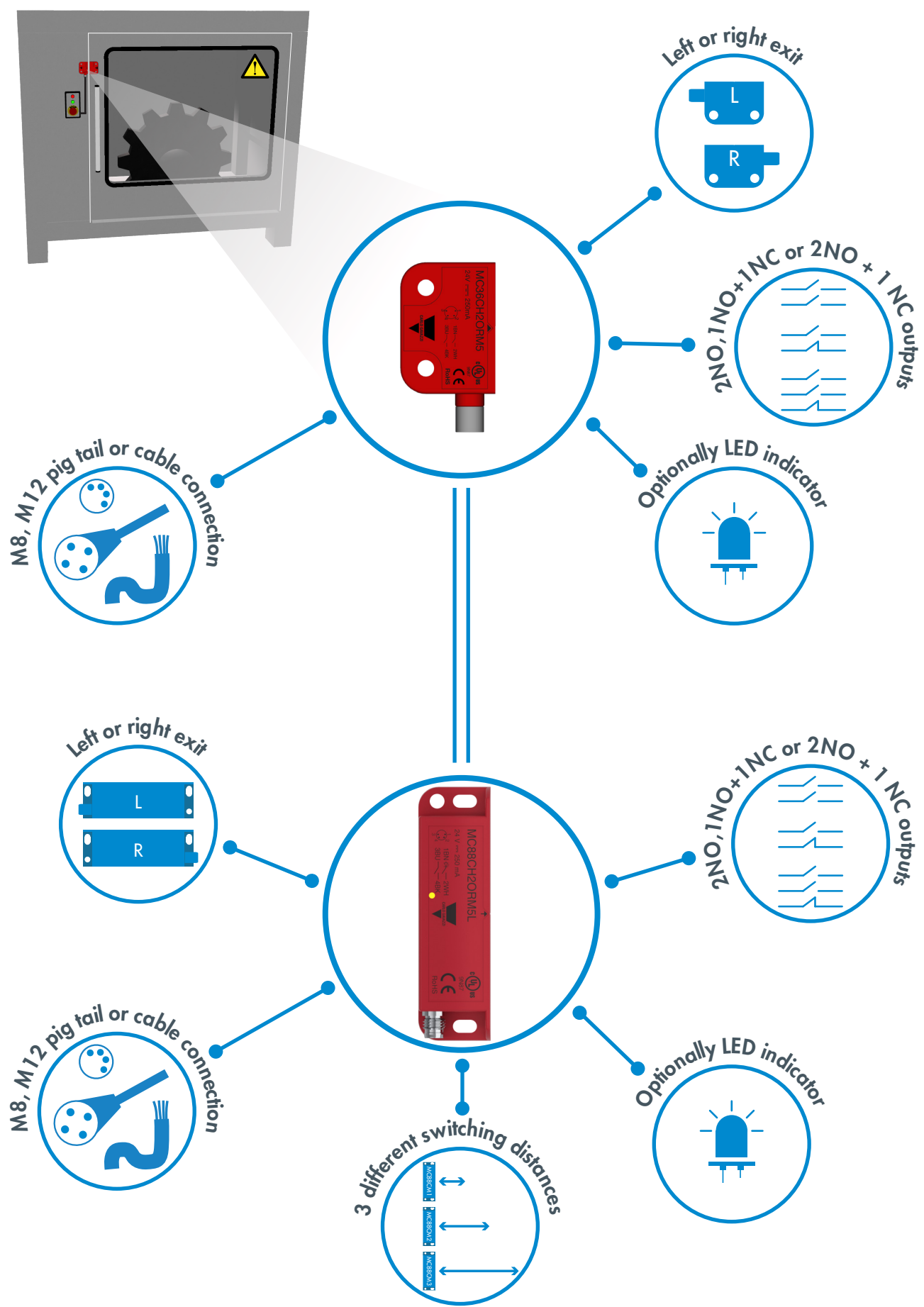
High performance

- Assured switching distance (Sao) of 5 mm, assured switch-off distance (Sar) of 15 mm with actuator MC88CM1
- Assured switching distance (Sao) of 8 mm, assured switch-off distance (Sar) of 18 mm with actuator MC88CM2
- Assured switching distance (Sao) of 18 mm, assured switch-off distance (Sar) of 30 mm with actuator MC88CM3
- Reinforced polymeric casing (PBT) with a protection degree IP67, operating temperature range from -25°C to +80°C
- IP69K protection degree for M8-plug versions without LED
- Standard dimensions: 88 x 25 x 13 mm



MC series

Safety magnetic sensors



Type selection

| | | | Compact | Standard | |
|-------------------------|-----------------------------|--------|-----------------------|-----------------------|---------------------|
| Left exit | | | | | |
| PVC cable 2m | 2NO | No LED | MC36CH2OLA2 | MC88CH2OLA2 | |
| | | LED | MC36CH2OLA2L | MC88CH2OLA2L | |
| | 1NO+1NC | No LED | MC36CH1O1CLA2 | MC88CH1O1CLA2 | |
| | | LED | MC36CH1O1CLA2L | MC88CH1O1CLA2L | |
| | 2NO + 1NC | No LED | MC36CH2O1CLA2 | MC88CH2O1CLA2 | |
| | | LED | MC36CH2O1CLA2L | MC88CH2O1CLA2L | |
| M8 integrated connector | 2NO | No LED | MC36CH2OLM5 | MC88CH2OLM5 | |
| | | LED | MC36CH2OLM5L | MC88CH2OLM5L | |
| | 1NO+1NC | No LED | MC36CH1O1CLM5 | MC88CH1O1CLM5 | |
| | | LED | MC36CH1O1CLM5L | MC88CH1O1CLM5L | |
| | Pig tail with M12 connector | 2NO | No LED | MC36CH2OLT1 | MC88CH2OLT1 |
| | | | LED | MC36CH2OLT1L | MC88CH2OLT1L |
| 1NO+1NC | | No LED | MC36CH1O1CLT1 | MC88CH1O1CLT1 | |
| | | LED | MC36CH1O1CLT1L | MC88CH1O1CLT1L | |
| Right exit | | | | | |
| PVC cable 2m | 2NO | No LED | MC36CH2ORA2 | MC88CH2ORA2 | |
| | | LED | MC36CH2ORA2L | MC88CH2ORA2L | |
| | 1NO+1NC | No LED | MC36CH1O1CRA2 | MC88CH1O1CRA2 | |
| | | LED | MC36CH1O1CRA2L | MC88CH1O1CRA2L | |
| | 2NO + 1NC | No LED | MC36CH2O1CRA2 | MC88CH2O1CRA2 | |
| | | LED | MC36CH2O1CRA2L | MC88CH2O1CRA2L | |
| M8 integrated connector | 2NO | No LED | MC36CH2ORM5 | MC88CH2ORM5 | |
| | | LED | MC36CH2ORM5L | MC88CH2ORM5L | |
| | 1NO+1NC | No LED | MC36CH1O1CRM5 | MC88CH1O1CRM5 | |
| | | LED | MC36CH1O1CRM5L | MC88CH1O1CRM5L | |
| | Pig tail with M12 connector | 2NO | No LED | MC36CH2ORT1 | MC88CH2ORT1 |
| | | | LED | MC36CH2ORT1L | MC88CH2ORT1L |
| 1NO+1NC | | No LED | MC36CH1O1CRT1 | MC88CH1O1CRT1 | |
| | | LED | MC36CH1O1CRT1L | MC88CH1O1CRT1L | |
| Actuator | | | | | |
| Sao: 5mm; Sar: 15mm | | | MC36CM | MC88CM1 | |
| Sao: 8mm; Sar: 18mm | | | - | MC88CM2 | |
| Sao: 18mm; Sar: 30mm | | | - | MC88CM3 | |

OUR SALES NETWORK IN EUROPE

AUSTRIA

Carlo Gavazzi GmbH
Ketzergasse 374,
A-1230 Wien
Tel: +43 1 888 4112
Fax: +43 1 889 10 53
office@carlogavazzi.at

BELGIUM

Carlo Gavazzi NV/SA
Mechelsesteenweg 311,
B-1800 Vilvoorde
Tel: +32 2 257 4120
sales@carlogavazzi.be

DENMARK

Carlo Gavazzi Handel A/S
Over Hadstenvej 40,
DK-8370 Hadsten
Tel: +45 89 60 6100
Fax: +45 86 98 15 30
handel@gavazzi.dk

FINLAND

Carlo Gavazzi OY AB
Ahventie, 4 B
FI-02170 Espoo
Tel: +358 9 756 2000
myynti@gavazzi.fi

FRANCE

Carlo Gavazzi Sarl
Zac de Paris Nord II, 69, rue de la Belle Etoile,
F-95956 Roissy CDG Cedex
Tel: +33 1 49 38 98 60
Fax: +33 1 48 63 27 43
french.team@carlogavazzi.fr

GERMANY

Carlo Gavazzi GmbH
Pfnorstr. 10-14
D-64293 Darmstadt
Tel: +49 6151 81000
Fax: +49 6151 81 00 40
info@gavazzi.de

GREAT BRITAIN

Carlo Gavazzi UK Ltd
4.4 Frimley Business Park,
Frimley, Camberley, Surrey GU16 7SG
Tel: +44 1 276 854 110
Fax: +44 1 276 682 140
sales@carlogavazzi.co.uk

ITALY

Carlo Gavazzi SpA
Via Milano 13,
I-20045 Lainate
Tel: +39 02 931 761
Fax: +39 02 931 763 01
info@gavazziacbu.it

NETHERLANDS

Carlo Gavazzi BV
Wijkermeerweg 23,
NL-1948 NT Beverwijk
Tel: +31 251 22 9345
Fax: +31 251 22 60 55
info@carlogavazzi.nl

NORWAY

Carlo Gavazzi AS
Melkeveien 13,
N-3919 Porsgrunn
Tel: +47 35 93 0800
Fax: +47 35 93 08 01
post@gavazzi.no

PORTUGAL

Carlo Gavazzi Lda
Rua dos Jerónimos 38-B,
P-1400-212 Lisboa
Tel: +351 21 361 7060
Fax: +351 21 362 13 73
carlogavazzi@carlogavazzi.pt

SPAIN

Carlo Gavazzi SA
Avda. Iparraguirre, 80-82,
E-48940 Leioa (Bizkaia)
Tel: +34 94 480 4037
Fax: +34 94 431 6081
gavazzi@gavazzi.es

SWEDEN

Carlo Gavazzi AB
V:a Kyrkogatan 1,
S-652 24 Karlstad
Tel: +46 54 85 1125
Fax: +46 54 85 11 77
info@carlogavazzi.se

SWITZERLAND

Carlo Gavazzi AG
Verkauf Schweiz/Vente Suisse
Sumpfstrasse 3,
CH-6312 Steinhausen
Tel: +41 41 747 4535
Fax: +41 41 740 45 40
info@carlogavazzi.ch

OUR SALES NETWORK IN THE AMERICAS

USA

Carlo Gavazzi Inc.
750 Hastings Lane,
Buffalo Grove, IL 60089, USA
Tel: +1 847 465 6100
Fax: +1 847 465 7373
sales@carlogavazzi.com

CANADA

Carlo Gavazzi Inc.
2660 Meadowvale Boulevard,
Mississauga, ON L5N 6M6, Canada
Tel: +1 905 542 0979
Fax: +1 905 542 22 48
gavazzi@carlogavazzi.com

MEXICO

Carlo Gavazzi Mexico S.A. de C.V.
Circuito Puericultores 22, Ciudad Satelite
Naucalpan de Juarez, Edo Mex. CP 53100
Mexico
T +52 55 5373 7042
F +52 55 5373 7042
mexicosales@carlogavazzi.com

BRAZIL

Carlo Gavazzi Automação Ltda.
Av. Francisco Matarazzo, 1752
Conj 2108 - Barra Funda - São Paulo/SP
Tel: +55 11 3052 0832
Fax: +55 11 3057 1753
info@carlogavazzi.com.br

OUR SALES NETWORK IN ASIA AND PACIFIC

SINGAPORE

Carlo Gavazzi Automation Singapore Pte. Ltd.
61 Tai Seng Avenue #05-06
Print Media Hub @ Paya Lebar iPark
Singapore 534167
Tel: +65 67 466 990
Fax: +65 67 461 980
info@carlogavazzi.com.sg

MALAYSIA

Carlo Gavazzi Automation (M) SDN. BHD.
D12-06-G, Block D12,
Pusat Perdagangan Dana 1,
Jalan PJU 1A/46, 47301 Petaling Jaya,
Selangor, Malaysia.
Tel: +60 3 7842 7299
Fax: +60 3 7842 7399
sales@gavazzi-asia.com

CHINA

Carlo Gavazzi Automation
(China) Co. Ltd.
Unit 2308, 23/F.,
News Building, Block 1, 1002
Middle Shennan Zhong Road,
Shenzhen, China
Tel: +86 755 83699500
Fax: +86 755 83699300
sales@carlogavazzi.cn

HONG KONG

Carlo Gavazzi Automation
Hong Kong Ltd.
Unit No. 16 on 25th Floor, One Midtown,
No. 11 Hoi Shing Road, Tsuen Wan,
New Territories, Hong Kong
Tel: +852 26261332 / 26261333
Fax: +852 26261316

TAIWAN

Branch of Carlo Gavazzi Automation
Singapore Pte. Ltd.
22F-1, No. 500 Shinzheng Rd,
Xitun Dist, Taichung City,
Taiwan, China
Tel: +886 4 2258 4001
Fax +886 4 22584 4002

OUR COMPETENCE CENTRES AND PRODUCTION SITES

DENMARK

Carlo Gavazzi Industri A/S
Hadsten

MALTA

Carlo Gavazzi Ltd
Zejtun

ITALY

Carlo Gavazzi Controls SpA
Belluno

LITHUANIA

Uob Carlo Gavazzi Industri Kaunas
Kaunas

CHINA

Carlo Gavazzi Automation (Kunshan) Co., Ltd.
Kunshan

HEADQUARTERS

Carlo Gavazzi Automation SpA
Via Milano, 13
I-20045 - Lainate (MI) - ITALY
Tel: +39 02 931 761
info@gavazziautomation.com

Energy to Components!

www.gavazziautomation.com