



Sensors

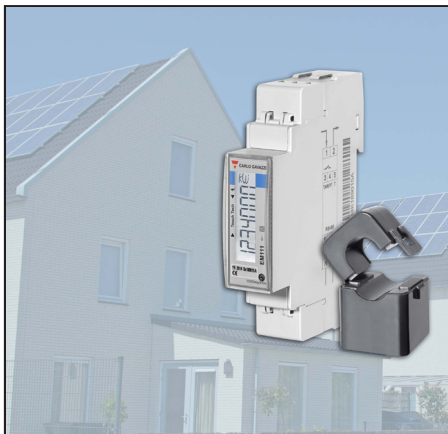


Switches



Controls

Application notes



Application Note : October 2021

Market involved : Renewable energy / EV charging

Product : EM111 MV5 + CTV

Customer : OEMs, system integrators, installers

Subject : 1-phase load balancing

CUSTOMER ISSUE :

In residential applications, electric vehicle charging systems are often installed in combination with photovoltaic panels and battery storage systems.

To best exploit the renewable energy, properly manage the battery and avoid exceeding the maximum allowed power from the grid, a load management system is needed, requiring power measurement in the different aspects of the system.

Getting the information from the utility's official meter is a complex operation and the retrofit installation of a 1-phase meter in the main cabinet is the best option.

OUR SOLUTION :

The EM111 MV5, in combination with the CTV current sensors (333 mV output), provides real-time data on power, energy and many other electrical variables via Modbus RTU.

BENEFITS :

- Only 1-DIN module
- Easy retrofit installation thanks to split-core current sensors
- Easy integration in any control system